



**MOVE INN ESTATES**

MAKING THE RIGHT MOVE



**Odencroft Road**

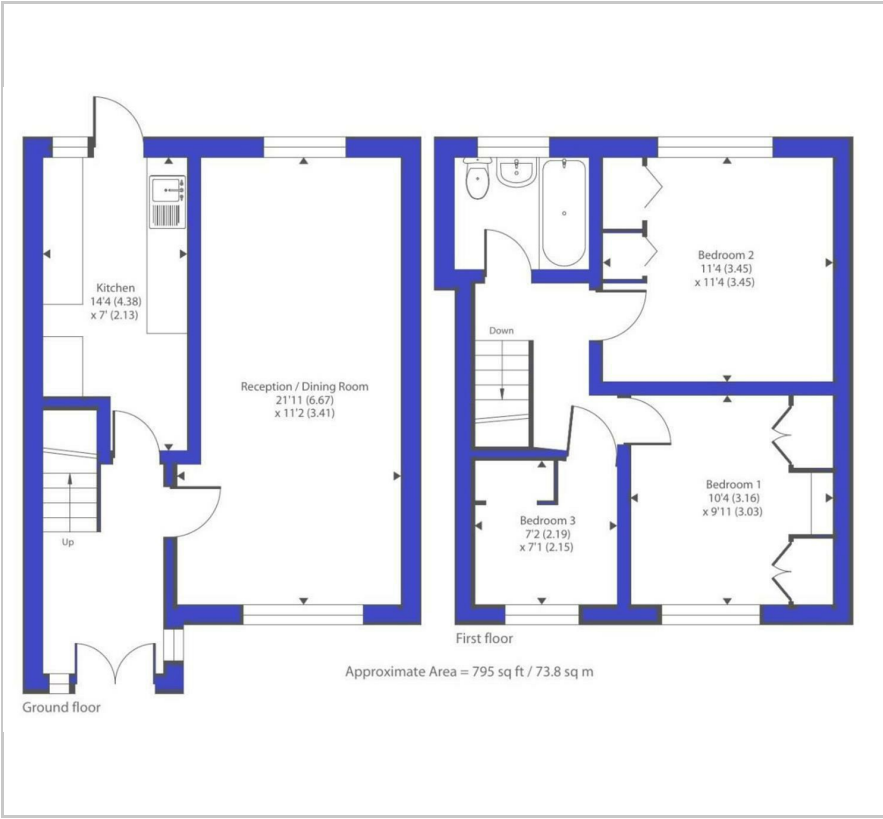
, Slough, SL2 2DE

Price Guide £375,000





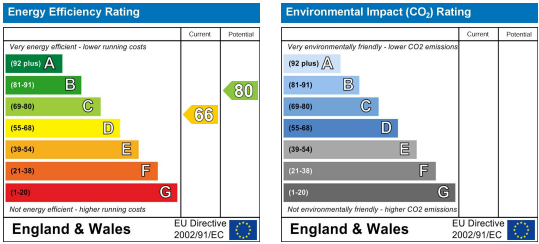
Floor Plan



Area Map



Energy Efficiency Graph



Viewing

Please contact our Move Inn Iver Office on 01753900950 if you wish to arrange a viewing appointment for this property or require further information.

- CHAIN FREE
- NO STAMP DUTY FOR FIRST TIME BUYERS
- THREE BEDROOMS
- ON ROAD PARKING
- POTENTIAL TO EXTEND
- EXCELLENT LOCATION (STPP)



**CHAIN FREE!**  
Move Inn Estates is delighted to present this beautifully refurbished three-bedroom mid-terraced house, perfect for families or investors alike. This property has been recently redecorated and fitted with brand-new carpets, offering a fresh and modern living space.

- The home features:
- A spacious lounge ideal for relaxing or entertaining.
  - A well-appointed kitchen.
  - A private garden, perfect for outdoor enjoyment.
  - Three generously sized bedrooms.
  - A modern family bathroom.
  - Additional highlights include ample parking, with both off-street and driveway options available.

Conveniently located near Slough Trading Estate, Burnham Train Station (Elizabeth Line), and a selection of excellent schools, this chain-free property is ready for immediate occupancy. Plus, no stamp duty is applicable for eligible first time buyers, making it a fantastic opportunity.

Contact Move Inn Estates today to arrange a viewing!

These particulars, whilst believed to be accurate are set out as a general outline only for guidance and do not constitute any part of an offer or contract. Intending purchasers should not rely on them as statements of representation of fact, but must satisfy themselves by inspection or otherwise as to their accuracy. No person in this firm's employment has the authority to make or give any representation or warranty in respect of the property.